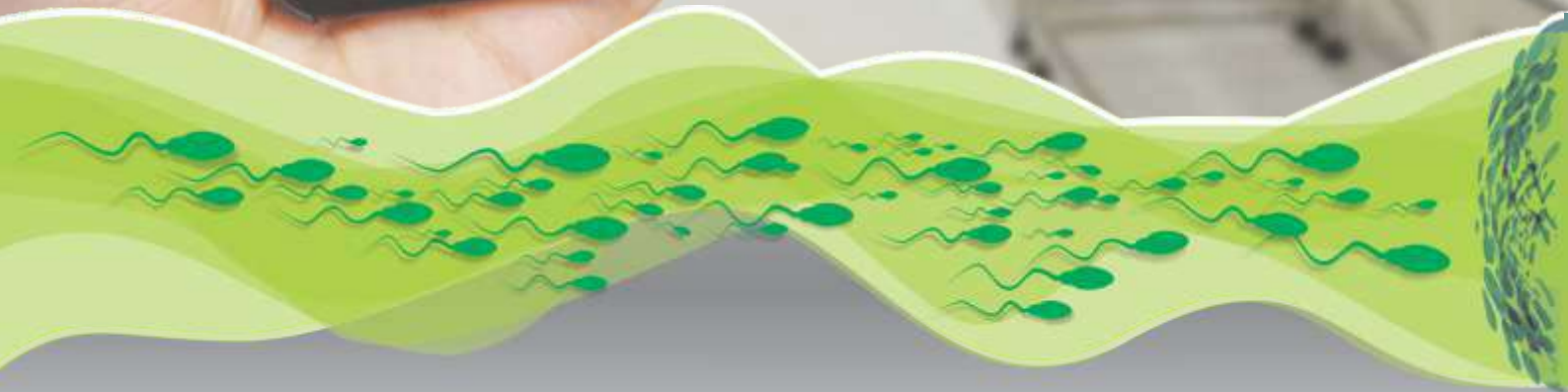


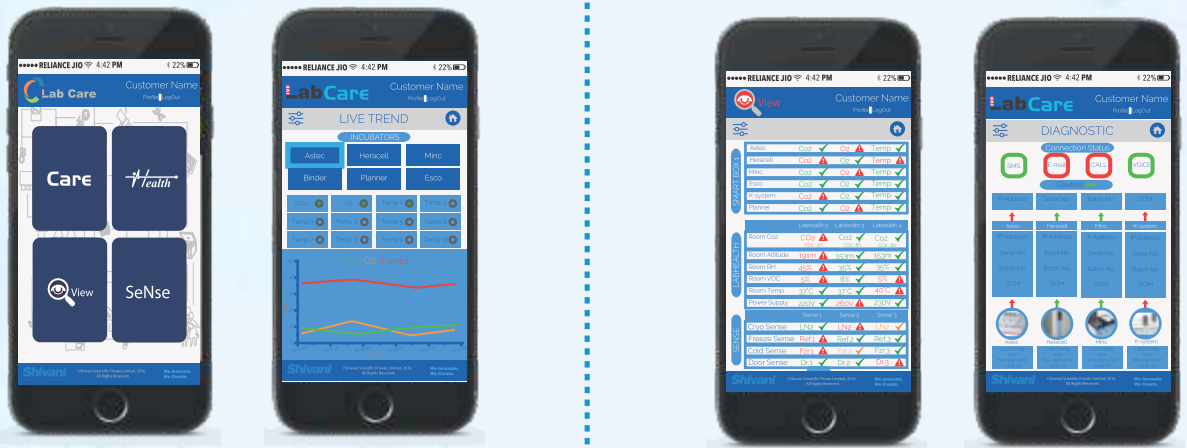
## Quality Control for Laboratory Optimisation



A new generation IOT enabled Smart Monitoring System for IVF Labs



An IOT Platform  
for intelligent future





## Track and manage the Gametes on the move

Bringing any extra safety for gametes in your IVF Lab requires significant involvement of the Lab Staff, as the embryologist has to perform not only routine clinical tasks but also regulatory paper work. Moreover the modern IVF Lab medical devices require additional attention in terms of IT, Software, Calibration, Validation and Witnessing to name a few. The dedicated Labcare APP provides freedom to Embryologists and Lab Staff to remain Stress Free by being in touch with all the CO<sub>2</sub> Incubators where critical gamete and embryo culture is taking place. So in real sense embryologist can track and manage gametes and embryos on the move.

### HOME SCREEN

- ☰ A user-friendly home screen which guides you to the info required

### DIAGNOSTIC SCREEN

- ☰ It helps the user to diagnose the connectivity of Labcare Console box & gateway with Incubator
- ☰ It helps the user to diagnose the net connectivity and the connectivity of Labcare with Cloud Server

### HISTORICAL TREND

- ☰ User can view the historical trend
- ☰ User can customize the view screen by selecting day and time
- ☰ User can view the trend of individual parameters
- ☰ User can view last 3 days historical trend

### LIVE ALARM

- ☰ This screen will help you know the alarms triggered
- ☰ Details of alarm will be displayed
- ☰ User can select Incubator center wise and see the alarm triggered

### LIVE TREND

- ☰ User can view the real time trend of the CO<sub>2</sub>, temperature and other parameters
- ☰ It will always show you last 45 minutes data trend

### LIVE DASHBOARD

- ☰ It shows you the live values in real time
- ☰ User just needs to select the Incubator
- ☰ User can view set point as well as current value



- ✓ IOS and Android App Interface
- ✓ Dual track monitoring
- ✓ Call, SMS, Email & Web alerts
- ✓ New generation cloud based system



## LABORATORY AND DOORS

### ■ Laboratory

Labhealth monitors and tracks six important parameters of lab environment such as VOC, Temperature, Humidity, Voltage, CO<sub>2</sub> and Altitude . All the parameters are measured IN REAL TIME and reflected the App in your mobile. Also, all the data is logged and can be presented in the form of graph or tabular values. Any substantial change in lab environment is notified by call, email, SMS.

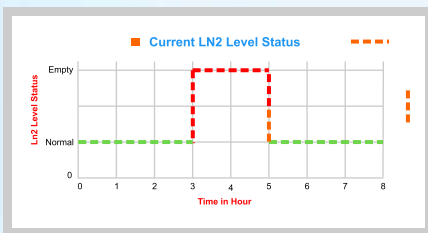
### ■ Doors:

Laboratory doors & incubator doors (certain types of incubators only) can be monitored with a specially designed Wi-Fi enabled device which monitors the door opening and closing and notifies the user, if the door is left open for a long time.



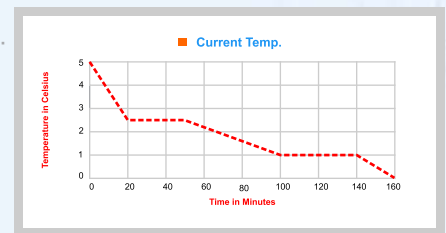


- ✓ IOS and Android App Interface
- ✓ Dual track monitoring
- ✓ Call, SMS, Email & Web alerts
- ✓ New generation cloud based system



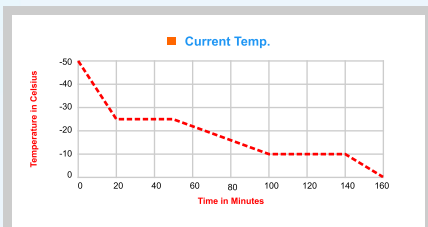
### ■ Cryo Sense :

It connects to all types of cryo containers with a unique level sensor which tracks the level of liquid nitrogen and not the temperature. Any change in level is notified to the user.



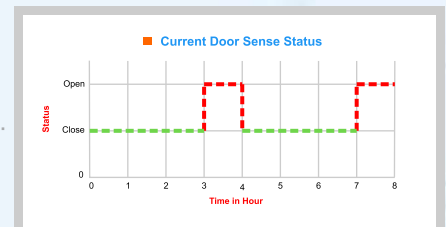
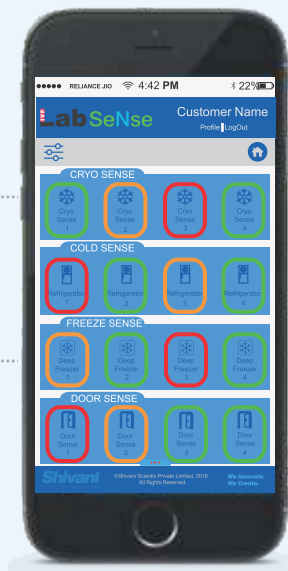
### ■ Cold Sense :

It is used to check, track and monitor the temperature of refrigerators of all types.



### ■ Freeze Sense :

It is used to check, track and monitor temperature of freezers of all types.



### ■ Door Sense :

Door sense is used for notifying if any door is open for lab, incubator etc. Door sense data logging capabilities assist with compliance with regulatory requirements



Battery Backup



App Monitoring

## Across all the devices

IOT Technology and Labcare control design at Labcare dedicated APP makes it possible for users to view, monitor and review alarms and events across multiple devices giving seamless working environment. The devices can be Mobile, Tablet, Laptop or Conventional Desktop.



System configuration: Ordering code

Product name	Description	Order code
Labcare Console	Labcare Console with two gateways with one year cloud charges 230VAC	LC 1012
Labcare Console	Labcare Console with two gateways with one year cloud charges 110VAC	LC 1013
Labcare Gateway	Labcare Gateway 230VAC	LC 1003
Labcare Gateway	Labcare Gateway 110VAC	LC 1004
Cloud Server	One year Cloud Server charges for one gateway	LC 1011
Lab Health	Lab Health 230VAC	LC 1005
Cryo Sense	Cryo Sense 230VAC	LC 1007
Cold Sense	Cold Sense 230VAC	LC 1014
Freeze Sense	Freeze Sense 230VAC	LC 1009
Door Sense	Door Sense 230VAC	LC 1016

**Shivani**  
Enabling life through technology

**We Innovate.  
We Create.**

ISO 9001 : 2015 | ISO 13485 : 2003 | CE

**Shivani Scientific Industries (P) Ltd.**

Shivani House, 26/A, Raju Industrial Estate, Penkar Pada Road, Mira 401 104, Dist. Thane (Mumbai), India

Tel.: +91 22 2896 1768 / 2896 6770 / 2897 6769 | Fax: +91 22 2896 6766

Email : marketing@shivanscientific.com | Website : www.shivanilVF.com / www.ivflabcare.com