

LINE OF IMPLANTS



# CORE



Implant line

# CORE

*The core of your clinical decisions*

## LESS IS MORE

Less drills and a simpler surgical box

## EASE OF INSERTION

Conical shape with active apex

## SIMPLICITY

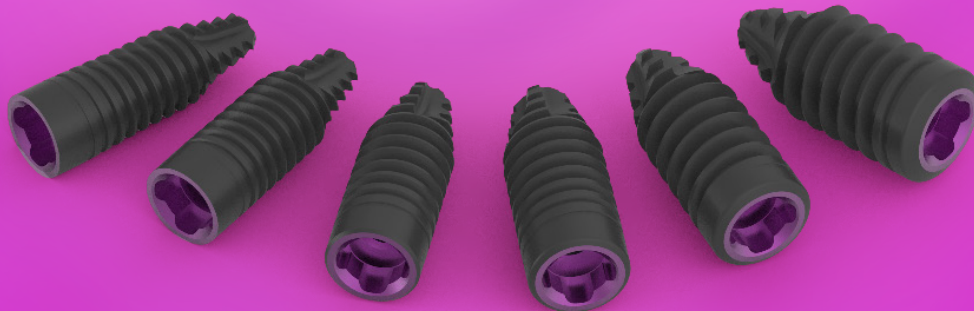
Common connection and prosthetic platform

## VERSATILITY

Variety of metrics and prosthetic attachments for the majority of treatments

## CLINICAL EFFECTIVENESS

Suitable procedures, specific surface and treated attachments



# CORE

*The core of your clinical decisions*

The result of latest developments, **the CORE line - a set of implants, with 6 different diameters and several lengths** - allows you to resolve the majority of implant treatments requested in dental clinics.

## FEATURES AND ADVANTAGES



### CONICAL SHAPE

Facilitates the surgical intervention in any **bone type** thanks to its apex with great advance capacity. It also makes it possible to achieve primary stability in post-extraction sockets.



### REDUCED COMPONENTS

CORE implants imply a **reduction in time and costs** in clinical practise, requiring **less drills and a simple surgical box** to keep them in.



### COMMON CONNECTION AND PROSTHETIC PLATFORM



An internal tetralobe with a **prosthetic emergence that is 3.5 mm in diameter, that allows the attachments used to be unified.**

They favour greater stability of the periimplant tissues, also making them the choice for restoring limited interdental spaces.



### UNICCA® Surface



Thanks to the properties of the **UnicCa surface**, CORE implants **provide greater bone stability and higher oseintegration.**



### BIOBLOCK® CONCEPT

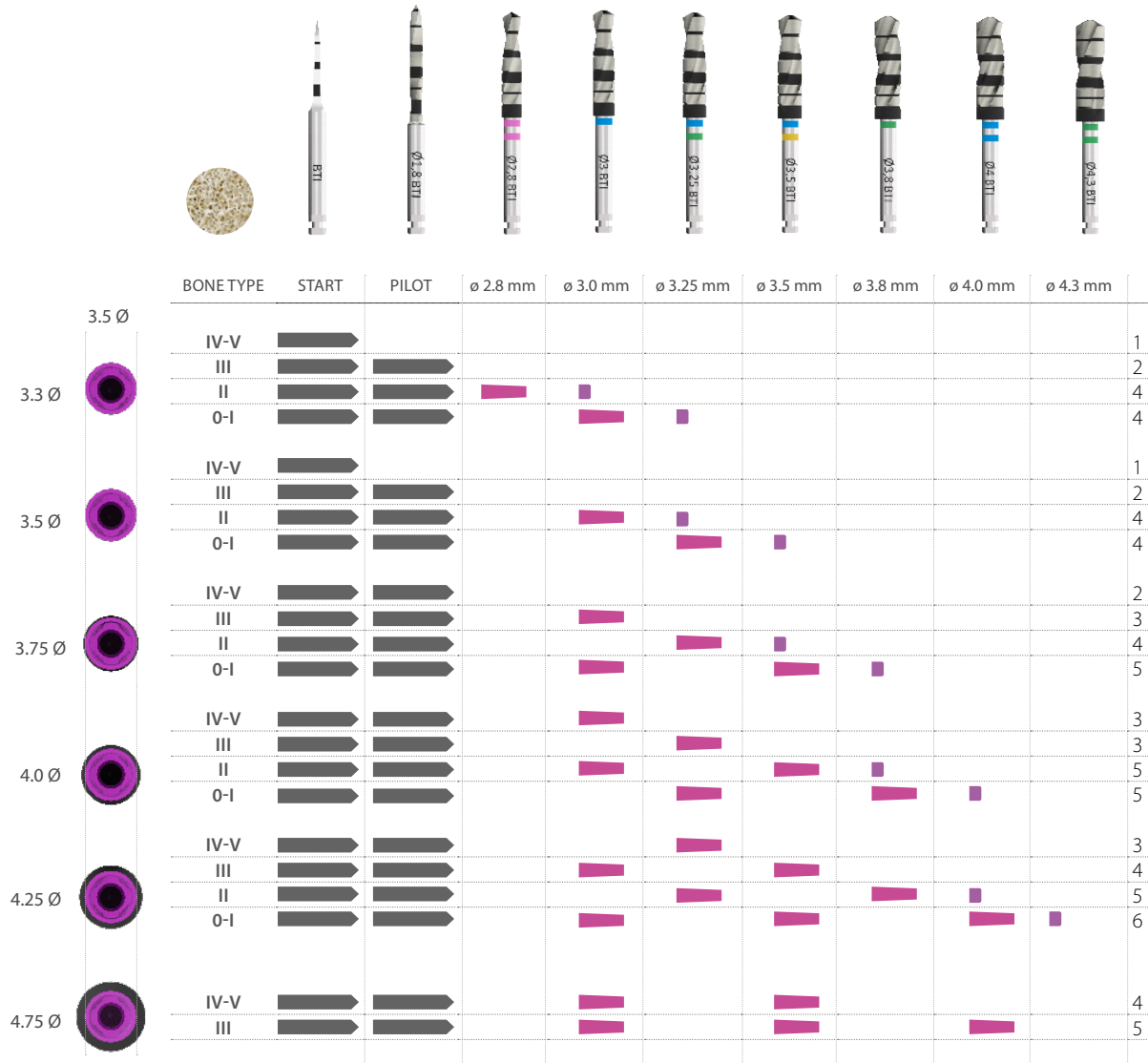


CORE incorporates **BioBlock®**, a biomechanical concept to guarantee **hermetic and biological sealing**, which favours preservation of the marginal bone around the implants.

Using **expanded transepithelial abutments**, platform changes are performed with wider emergence profiles.

# Recommended drilling sequences

Ø3.5 mm diameter of prosthetic platform



- Total depth of implant
- 6.5 mm drilling depth
- 2-3 mm drilling depth



Type	Hounsfield	DRILLING	IRRIGATION	SPEED
I	1050 - 1400	Initial drill	800 - 1,000 rpm	yes
II	850 - 1000	Drills	50 - 75 rpm	no
III	550 - 800			
IV	400 - 500			
V	100 - 350			



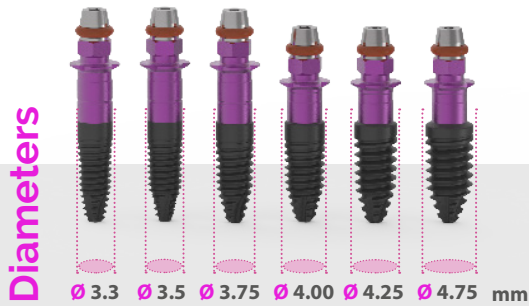
# Narrow Platform

## IMPLANT

# CORE

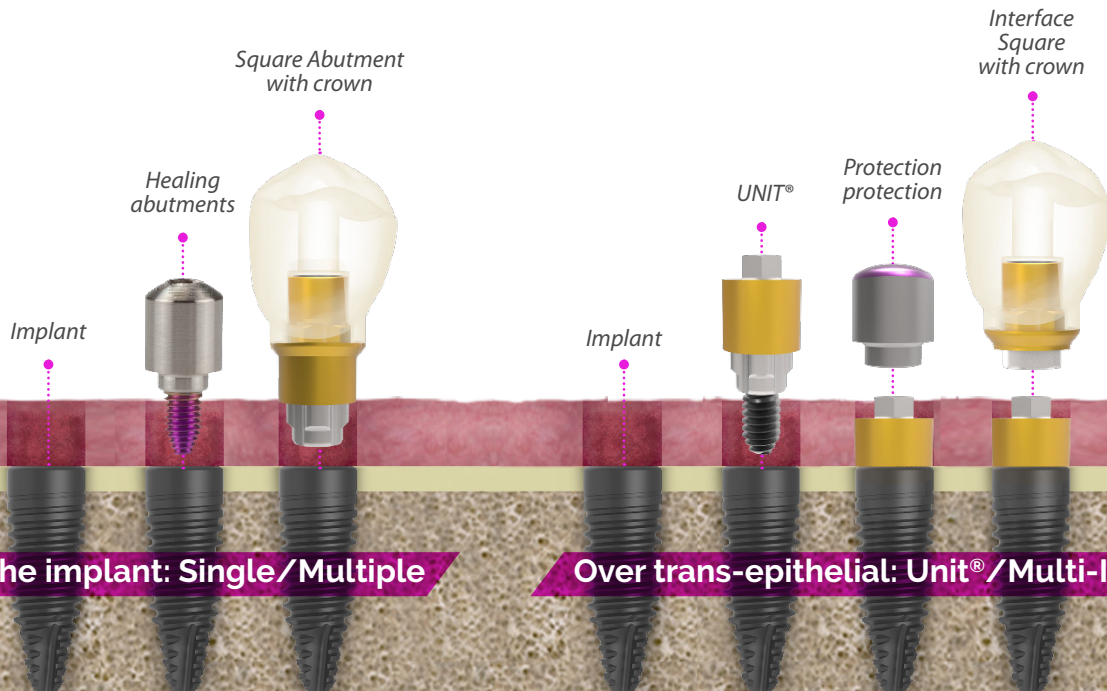
Ø3.5 mm platform diameter

Different lengths, according to diameter,  
from 5.5 mm to 10-13-15 mm



## Prosthetic restoration

of CORE implants



Restorations can be completed both with the conventional procedure and with CAD/CAM technology.



### **BTI Sales**

San Antonio, 15 · 5º  
01005 Vitoria-Gasteiz  
(Álava) · SPAIN  
Tel.: +34 945 140 024  
Fax: +34 945 135 203  
pedidos@bticomercial.com

### **Subsidiaries**

#### **GERMANY**

Mannheimer Str. 17  
75179 Pforzheim · Germany  
Tel.: +49 (0) 7231 428060  
Fax: +49 (0) 7231 4280615  
info@bti-implant.de

#### **FRANCE**

6 Avenue Neil Armstrong  
Immeuble Le Lindbergh  
33692 Merignac CEDEX · France  
Tel: (33) 5 56 18 11 18  
info@bti-implant.fr

#### **ITALY**

C/o Regus Milano Linate  
Viale E. Forlanini 23  
20134 Milan (MI) · Italy  
Tel.: +39 0270605067  
info@bti-implant.it

#### **MEXICO**

Ejercito Nacional Mexicano 351, 3A  
Col. Granada Delegación Miguel Hidalgo  
Mexico DF · CP 11520 · Mexico  
Tel.: (52) 55 52502964  
Fax: +52 55 55319327  
bti.mexico@bti-implant.com

[www.bti-biotechnologyinstitute.es](http://www.bti-biotechnologyinstitute.es)

**NOTE: consult your distributor for the availability of the product in the different markets.**

### **B.T.I.**

#### **Biotechnology Institute S.L.**

Parque Tecnológico de Alava  
Leonardo da Vinci, 14  
01510 Miñano (Álava) Spain  
bti.implantes@bti-implant.es

#### **PORTUGAL**

Praça Mouzinho de Albuquerque, 113, 5º  
4100-359 Porto · Portugal  
Tel.: (351) 22 120 1373  
Fax: (351) 22 120 1311  
bti.portugal@bticomercial.com

#### **UK**

870 The Crescent  
Colchester Business Park · Colchester  
Essex CO49YQ · UK  
Tel.: (44) 01206580160  
Fax: (44) 01206580161  
info@bti-implant.co.uk

#### **USA**

1730 Walton Road  
Suite 110  
Blue Bell, PA 19422-1802 · USA  
Tel.: (1) 215 646 4067  
Fax: (1) 215 646 4066  
info@bti-implant.us



**BTI APP**  
NEW PRODUCTS

iPhone/smartphone version  
iPad/tablet version (**exclusive content for clients**)